

CURRENT 100 Ampere
 VOLTAGE RANG 800 to 1800 Volts

MDQ100-08 THRU MDQ100-18

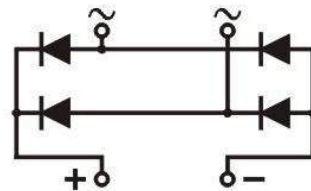
Applications

- Single phase rectifiers for power supplies
- Rectifiers for DC motor field supplies
- Battery charger rectifiers
- Input rectifiers for variable frequency drives



Featu

- Single phase bridge rectifier
- Blocking voltage:800 to 1800V



Module Type

TYPE	VRRM	VRSM
MDQ100-08	800V	900V
MDQ100-12	1200V	1300V
MDQ100-16	1600V	1700V
MDQ100-18	1800V	1900V

Maximum Ratings

Symbol	Conditions	Values	Units
I_D	$T_c=85$	50/60/75/90/100	A
I_{FSM}	$T_{vj}=45$ t=10ms (50HZ), sine	920	A
i^2t	$T_{vj}=45$ t=10ms (50HZ), sine	4200	A^2S
Viso	a.c.50HZ;r.m.s.;1 min	2500	V
T_{vj}		-40 to 150	
T_{stg}		-40 to 125	
Weight	Module (Approximately)	200	g

Thermal Characteristics

Symbol	Conditions	Values	Units
$R_{th(j-c)}$	Per module	0.30	/W

Electrical Characteristics

Symbol	Conditions	Values	Units
VFM	$T=25$ $I_{FM}=300A$	1.90	V
IRD	$T_{vj}=25$ $VRD=VRRM$	≤ 0.5	mA
	$T_{vj}=150$ $VRD=VRRM$	≤ 5	mA

CURRENT 100 Ampere
 VOLTAGE RANG 800 to 1800 Volts

MDQ100-08 THRU MDQ100-18

RATING AND CHARACTERISTIC CURVES MDQ100-08 Thru MDQ100-18

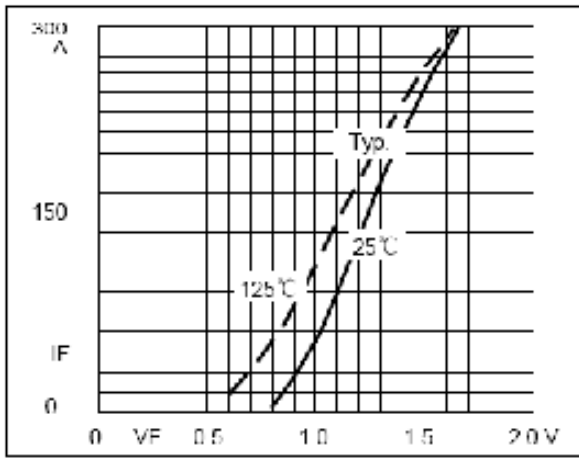


Fig1. Forward Characteristics

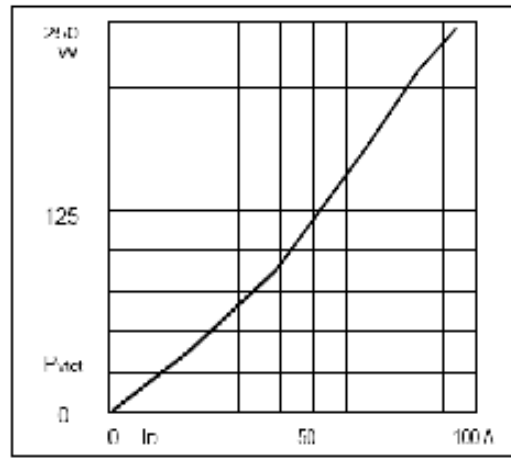
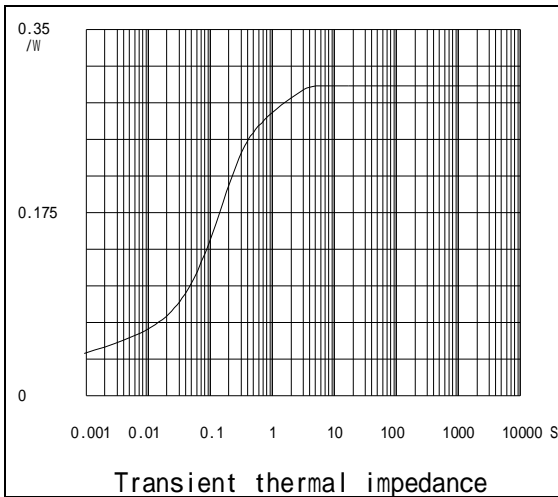
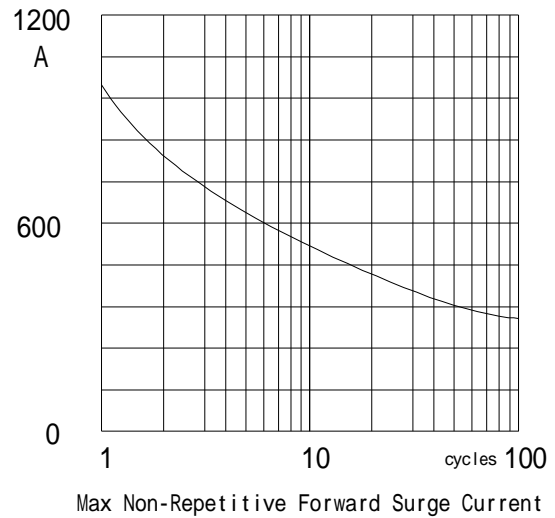


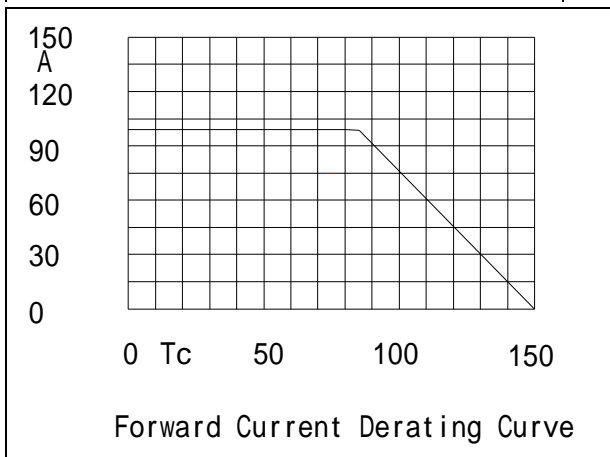
Fig2. Power dissipation



Transient thermal impedance



Max Non-Repetitive Forward Surge Current



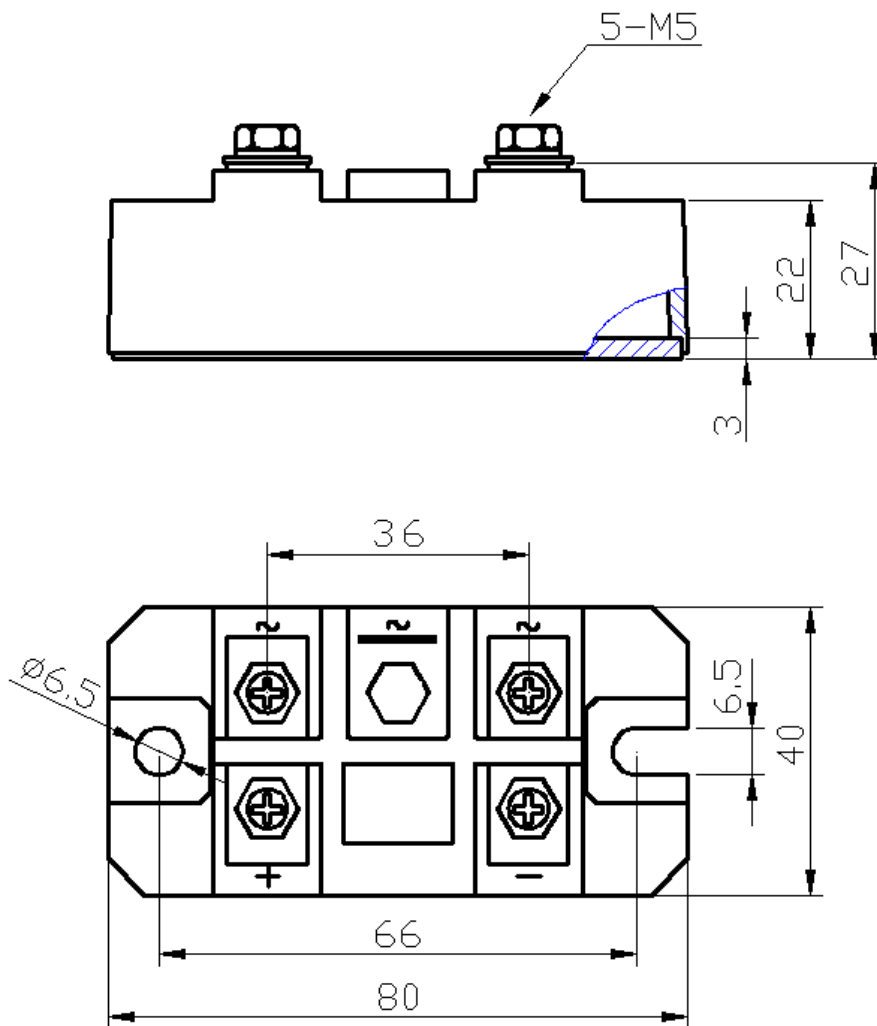
Forward Current Derating Curve

CURRENT 100 Ampere
VOLTAGE RANG 800 to 1800 Volts

MDQ100-08 THRU MDQ100-18

Package Outline Information

CASE: M18



CURRENT 100 Ampere
 VOLTAGE RANG 800 to 1800 Volts

MDQ100-08 THRU MDQ100-18

Package Outline Information

CASE: M15

